

TRUCK CRANE

QY55D_{531.2R}



ZOOMLION

Zoomlion Heavy Industry Science & Technology Co.,Ltd.

Add:Zoomlion Overseas Building, No.613, 3rd Section, Furong Middle Road, Yuhua District, Changsha, Hunan, P.R.China 410205

Copyright © 2015 Zoomlion. All rights reserved. Reproduction and copying of any part of the Contents is not allowed for any purposes without Zoomlion's written approval.
Note: No product coating appearance shall be subject to sample.



Printed in China. VN : EN-MC-201509-01

ZOOMLION

en.zoomlion.com

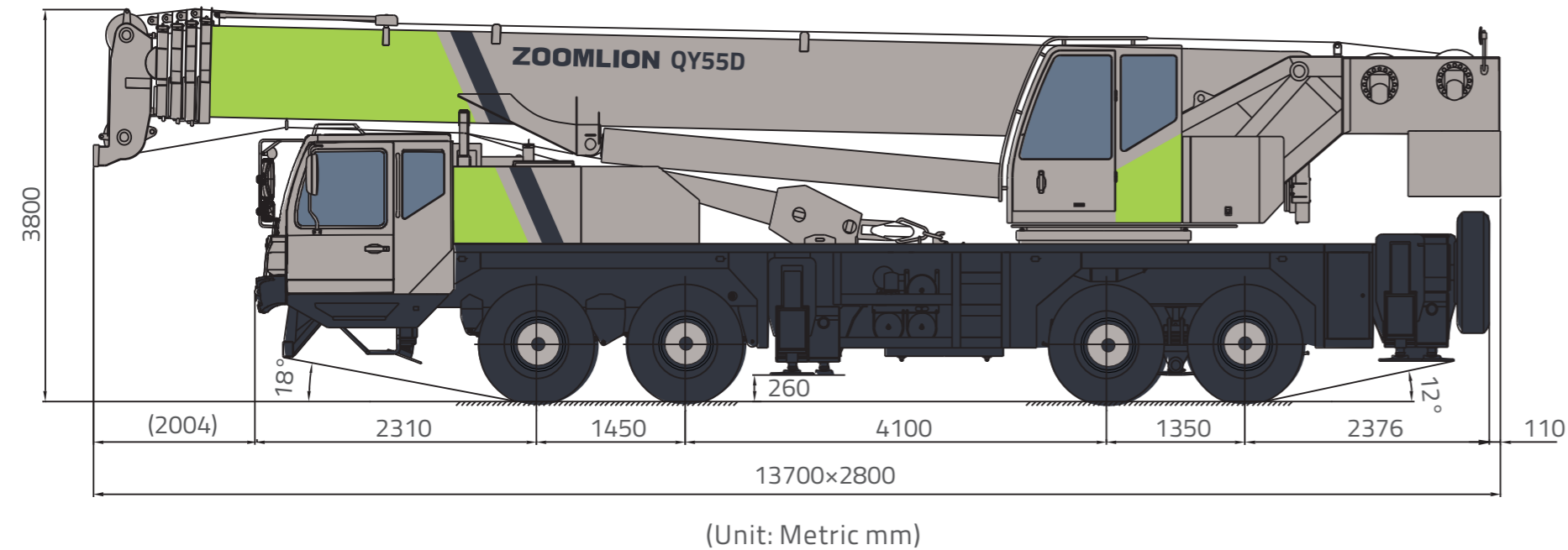
Features

Lifting capacity

Integrates Zoomlion more than 40 years experience in mobile cranes with advanced technology

1. Weight optimized and distortion-resistant design of low-alloy and high-strength steel with U-type boom profile providing the max lifting height up to 58m
2. Four-axle brand-new truck crane chassis: strong power, excellent maneuverability and traveling reliability
3. Overall upgraded controllability, with the working speed, movement smoothness and micro-mobility perfectly balanced
4. Man-machine engineering optimization based on operation safety and efficiently improvement.

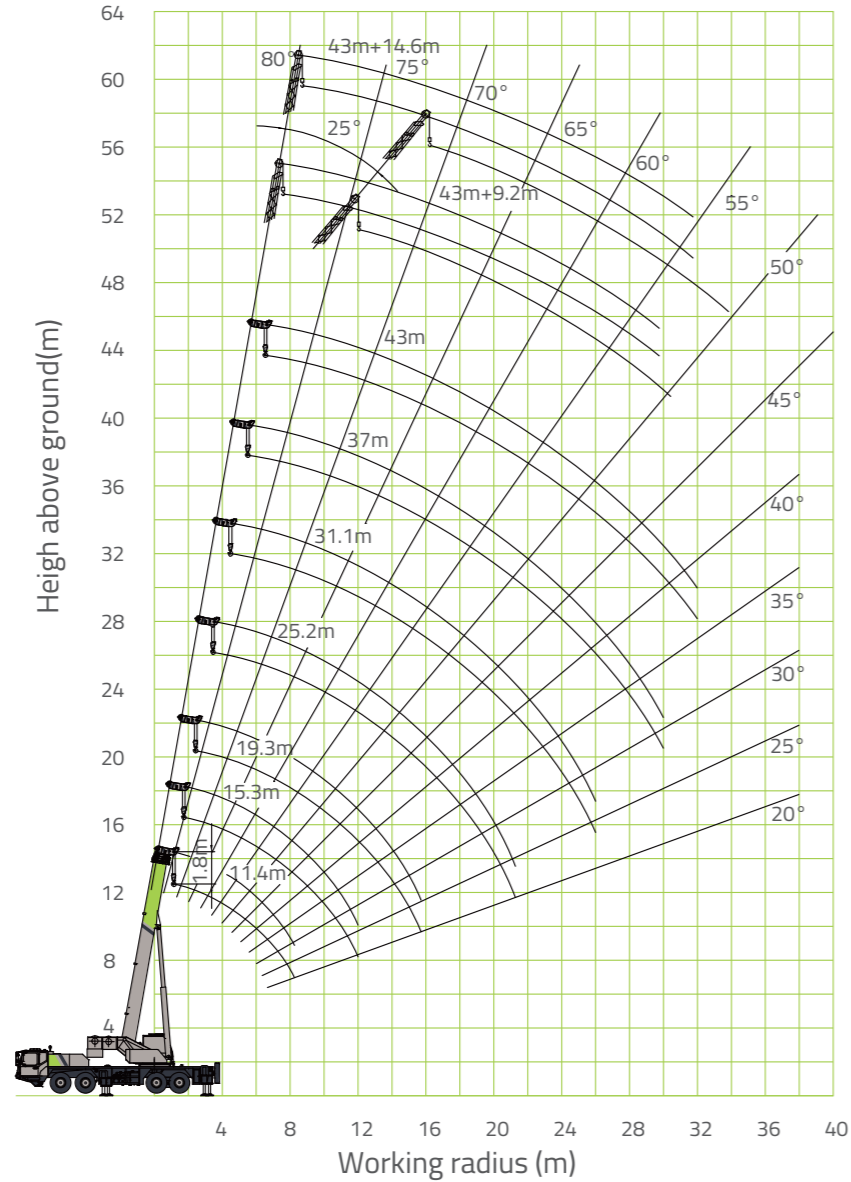
Overall View



Technical Data

	Item	Unit	Value	Remarks
Work performance	Max. rated lifting capacity	kg	55000	
	Max. load moment of basic boom	kN.m	2009	
	Max. load moment of main boom (fully extended)	kN.m	1050	
	Max. lifting height of basic boom	m	12.6	
	Max. lifting height of main boom (fully extended)	m	43.6	These parameters do not include deflection of main boom and jib.
	Max. lifting height of jib	m	58	
Work speeds	Max. hoist rope speed (Main winch)	m/min	120	
	Max. hoist rope speed (Auxiliary winch)	m/min	120	
	Boom derricking up time	s	50	
	Boom telescoping out time	s	95	
	Slewing speed	r/min	0 - 2	
Driving	Max. height above sea level	m	2000	
	Max. driving speed	km/h	76	
	Max. gradeability	%	40	
	Min. turning diameter	m	≤ 24	
	Min. ground clearance	mm	260	
	Oil consumption per hundred kilomete	L	43	
Mass	Deadweight in driving condition	kg	42000	
	Complete vehicle kerb mass	kg	41870	
	Front axle load	kg	16000	
	Rear axle load	kg	26000	
Dimensions	Overall dimensions (L × W × H)	mm	13700 × 2800 × 3800	
	Outrigger spread (L)	m	5.92	
	Outrigger spread (W)	m	Fully extended: 7.1, Intermediately extended: 4.8	
	Tail slewing radius	mm	3900	
	Main boom length	m	11.4 - 43.0	
	Boom angle	°	-2 - 80	
	Jib length	m	9.2, 14.6	Low-mounted, open-type
	Offset	°	5, 25, 45	

Lifting Height Chart



Lifting Capacity Tables

Table 1

Unit: Metric kg Table 2

Unit: Metric kg

Radius (m)	Main boom						
	Outriggers and telescoping cylinder I fully extended, over sides and rear						
	11.4 m	15.3 m	19.3 m	25.2 m	31.1 m	37.0 m	43.0 m
3.0	55000	45000	35000				
3.5	51000	45000	35000				
4.0	48000	45000	35000	25000			
4.5	45000	43000	32500	25000			
5.0	41000	40000	30000	25000			
5.5	36000	36000	28000	24000	17500		
6.0	32500	32500	26500	22500	17500		
6.5	29500	29500	25000	21000	17500		
7.0	26500	26500	23500	20000	17500	14000	
7.5	23500	23500	22000	19000	16700	13500	
8.0	21000	21000	21000	18000	16000	13000	
9.0	16500	16500	16500	16500	14500	12200	9500
10.0		13500	13500	14500	13500	11500	9300
11.0		11000	11000	12000	12500	10700	9000
12.0		9000	9000	10000	10900	10100	8500
14.0			6300	7300	8100	8500	7500
16.0			4400	5400	6100	6500	6700
18.0				4000	4700	5100	5400
20.0				3000	3600	4000	4300
22.0				2200	2800	3200	3500
24.0					2100	2500	2800
26.0					1550	1950	2200
28.0						1500	1750
30.0						1100	1350
32.0							1000
I	0	3.9	7.9	7.9	7.9	7.9	7.9
II	0	0	0	5.9	11.8	17.7	23.7
Reeving	12	10	8	6	4	4	3
Hook	50 t						

Radius (m)	Main boom					
	Outriggers fully extended and telescoping cylinder I intermediately extended, over sides and rear					
	11.4 m	15.3 m	21.2 m	27.1 m	33.0 m	39.0 m
3.0	55000	45000	25000			
3.5	51000	45000	25000			
4.0	48000	45000	25000			
4.5	45000	43000	25000	17500		
5.0	41000	40000	25000	17500		
5.5	36000	36000	25000	17500		
6.0	32500	32500	25000	17500	14000	
6.5	29500	29500	25000	17500	14000	
7.0	26500	26500	25000	17500	13500	
7.5	23500	23500	25000	17500	13000	9500
8.0	21000	21000	23000	17000	12500	9500
9.0	16500	16500	18500	16000	11500	9500
10.0		13500	15100	15100	10500	9000
11.0		11000	12500	13200	9700	8500
12.0		9000	10500	11200	9000	8000
14.0			7700	8400	7800	7000
16.0			5800	6400	6800	6100
18.0			4400	5000	5400	5400
20.0				3900	4300	4600
22.0				3100	3400	3700
24.0					2700	3000
26.0					2200	2500
28.0					1700	2000
30.0						1600
32.0						1250
I	0	3.9	3.9	3.9	3.9	3.9
II	0	0	5.9	11.8	17.7	23.7
Reeving	12	10	6	4	4	3
Hook	50 t					

