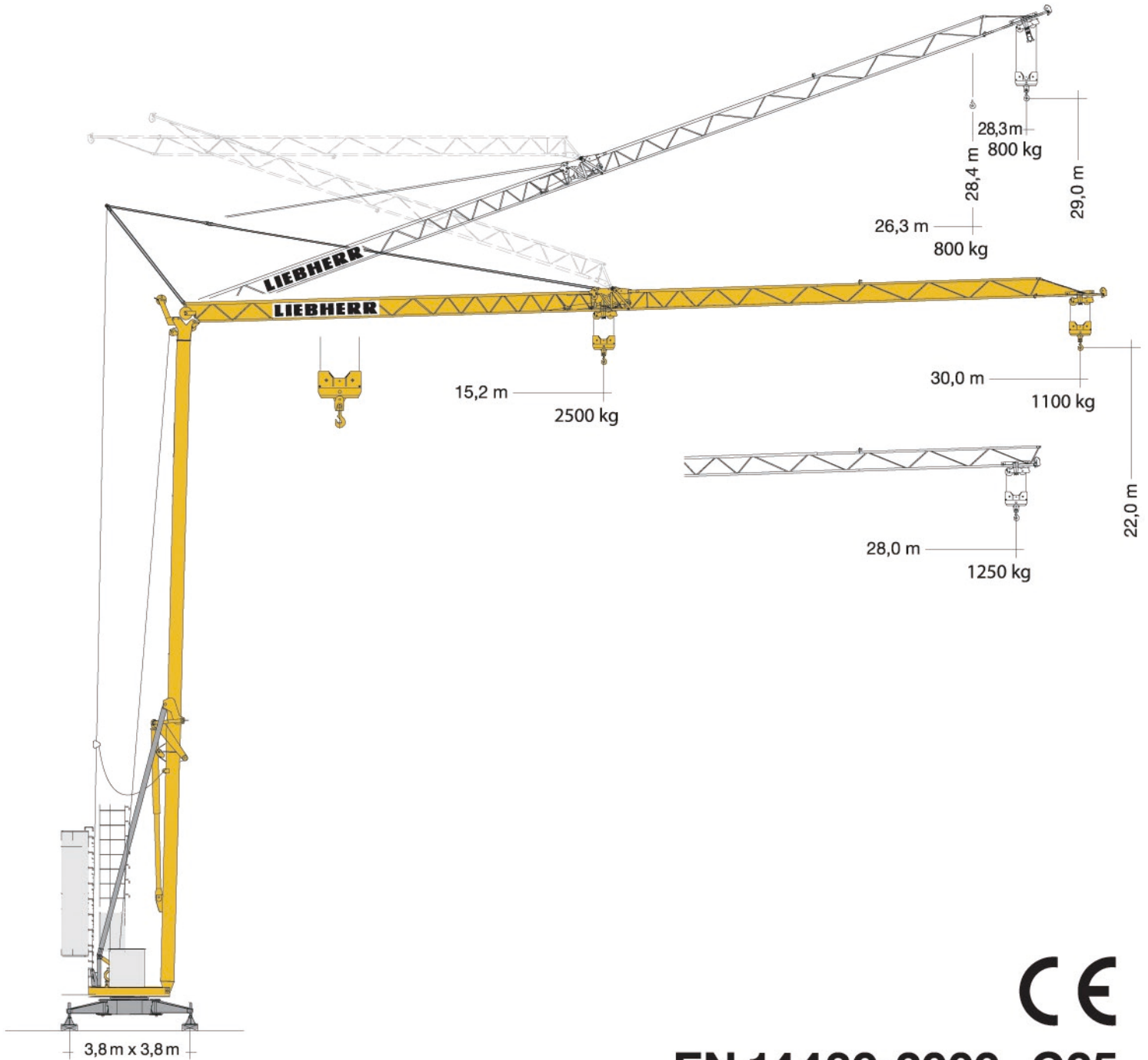
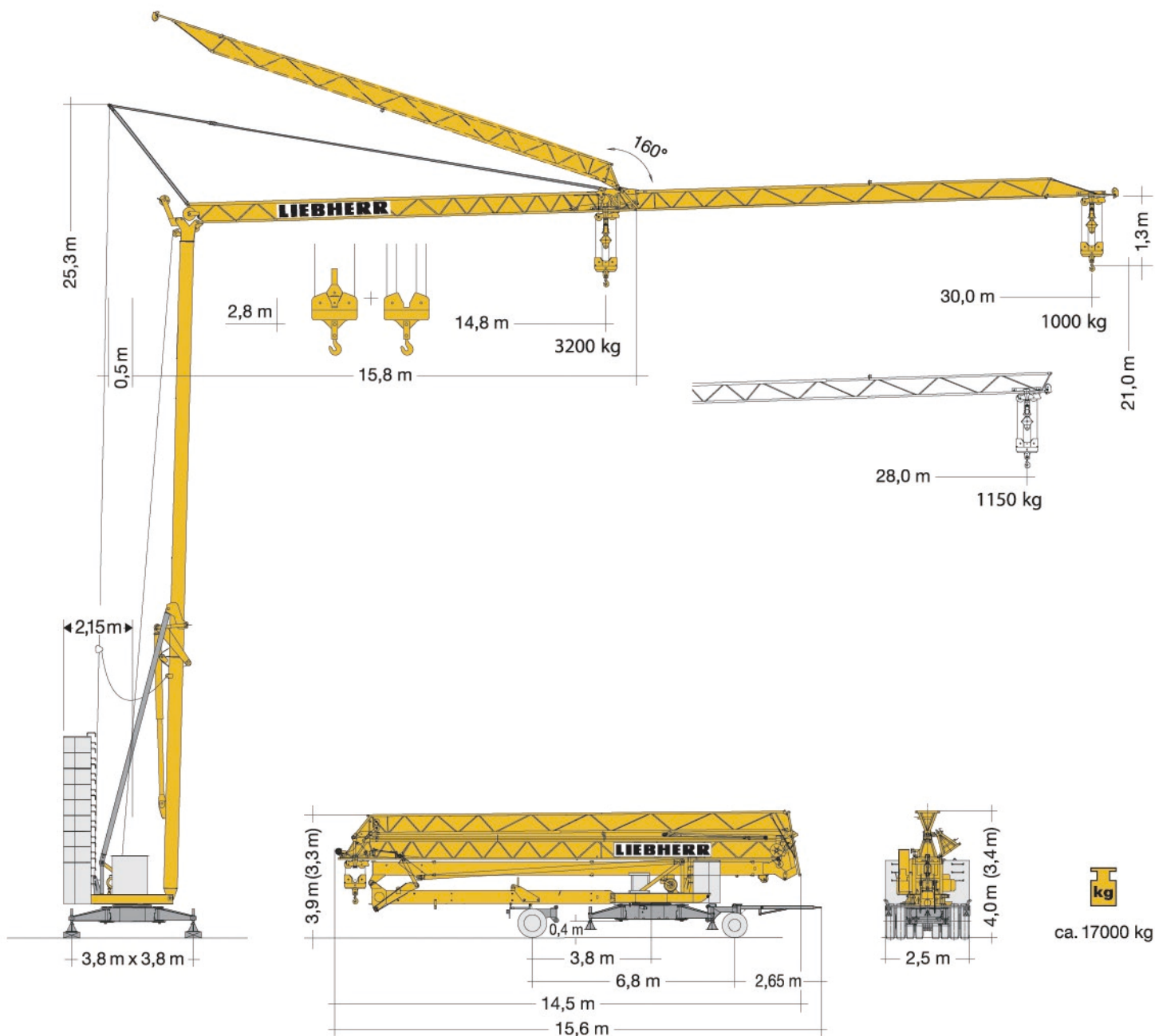


**Grúa Torre / Tower Crane**



**CE**

**EN 14439:2009-C25**



## Peso / Weight

	$r = 2,15\text{ m}$		1 x 4800 kg 7 x 2000 kg <b>18800 kg</b>		1 x 4800 kg 8 x 2000 kg <b>20800 kg</b>		<b>10500 kg</b>
			1 x 6800 kg 6 x 2000 kg		1 x 6800 kg 7 x 2000 kg		

# Alcances y cargas / Radius and capacity

m	m/kg	m/kg																		
		12,0	13,0	14,0	15,0	16,0	17,0	18,0	19,0	20,0	21,0	22,0	23,0	24,0	25,0	26,0	27,0	28,0	29,0	30,0
30,0	2,8 - 15,2 2500	2500	2500	2500	2500	2350	2180	2040	1910	1800	1700	1600	1520	1440	1370	1310	1250	1200	1150	1100
28,0	2,8 - 15,7 2500	2500	2500	2500	2500	2450	2270	2120	1990	1870	1770	1670	1580	1500	1430	1370	1310	1250	1200	1150
14,8	2,8 - 14,8 2500	2500	2500	2500	2500															

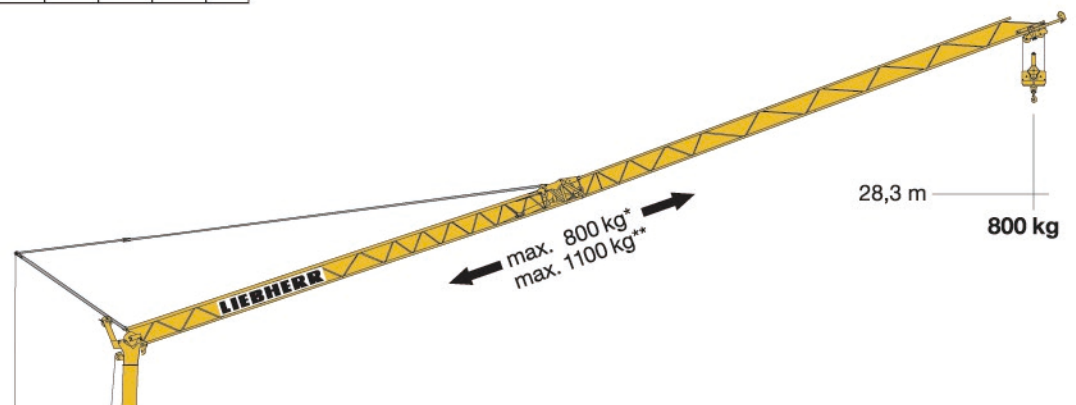
  

m	m/kg	m/kg																				
		10,0	11,0	12,0	13,0	14,0	15,0	16,0	17,0	18,0	19,0	20,0	21,0	22,0	23,0	24,0	25,0	26,0	27,0	28,0	29,0	30,0
30,0	2,8 - 17,2 2000	2000	2000	2000	2000	2000	2000	2000	2000	1890	1770	1660	1560	1480	1400	1320	1260	1200	1140	1090	1040	1000
28,0	2,8 - 17,9 2000	2000	2000	2000	2000	2000	2000	2000	2000	1990	1860	1750	1640	1550	1470	1390	1330	1260	1200	1150		
14,8	2,8 - 14,8 2000	2000	2000	2000	2000	2000	2000															

m	m/kg	m/kg																				
		10,0	11,0	12,0	13,0	14,0	15,0	16,0	17,0	18,0	19,0	20,0	21,0	22,0	23,0	24,0	25,0	26,0	27,0	28,0	29,0	30,0
30,0	2,8 - 9,9 4000	3970	3500	3140	2840	2580	2370	2190	2030	1890	1770	1660	1560	1480	1400	1320	1260	1200	1140	1090	1040	1000
28,0	2,8 - 10,3 4000	4000	3680	3290	2980	2710	2490	2300	2130	1990	1860	1750	1640	1550	1470	1390	1330	1260	1200	1150		
14,8	2,8 - 12,4 4000	4000	4000	4000	3750	3430	3200															

## Pluma inclinada 20° Elevated jib 20°



## Mecanismos / Driving Units

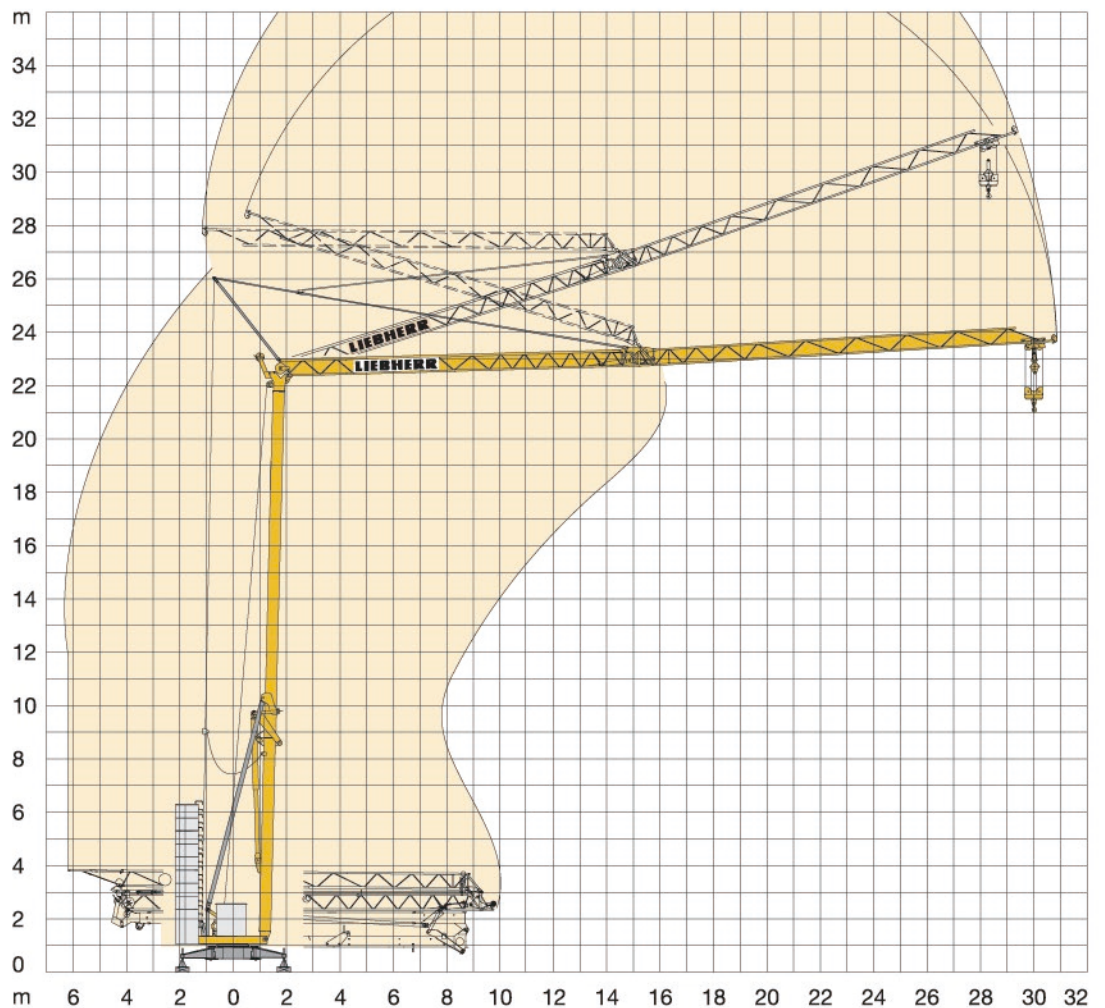
	U/min 0 ↔ 0,8 sl./min tr./min	2,2 kW EDC
	18,0 / 36,0 m/min	1,1 / 1,8 kW * 1,9 / 2,8 kW **
	ca. 160°/min.	4,0 kW

<b>BGL</b>		C.0.05.0031
------------	--	-------------







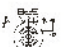

	400 V	Hz	kVA
57,0 m	4 x 6 mm <sup>2</sup> KL	50	19,0 KL
87,0 m	4 x 6 mm <sup>2</sup> FU		17,0 FU

	Velocidad Step	kg		m/min	
		kg	m/min	kg	m/min
11,0 kW KL 	1	2500	5,0		
	2	2500	20,0		
	3	1300	40,0		
	1	2000 4000	5,0 2,5		
	2	2000 4000	20,0 10,0		
	3	1300 2600	40,0 20,0		
11,0 kW FU 	1	2500	4,0		
	2	2500	20,0		
	3	1300	38,0		
	4	1000	50,0		
	1	2000 4000	4,0 2,0		
	2	2000 4000	20,0 10,0		
	3	1300 2600	38,0 19,0		
	4	1000 2000	50,0 25,0		

# Procedimiento de montaje / Erection procedure



## Lista de contenido / Packing list

Pos. Item	Cant. Qty.				L (m)	B (m)	H (m)	kg	
1	1	<b>Eje de transporte delantero</b> Road transport axle front	Tra 100 KY 2 Tra 100 KY 6 Tra 100 KY 6 A			4,30	1,25	1,31	750
						4,30	1,25	1,31	850
2	1	<b>Eje de transporte trasero</b> Road transport axle behind	Tra 120 GY 1 und/and/et e/y/y GY 1 A			1,60	2,50	1,20	1000
3	1	<b>Eje de transporte delantero con adaptador intermedio</b> Road transport axle front w. adapter	Tra 100 KY 2 Tra 100 KY 6 Tra 100 KY 6 A			4,30	1,25	1,31	950
						4,30	1,25	1,31	1050
4	1	<b>Eje de transporte trasero con adaptador intermedio</b> Road transport axle behind w. adapter	Tra 120 GY 1 und/and/et e/y/y GY 1 A			1,75	2,50	1,25	1200

**Sujeto a modificaciones**  
Subject to alterations

**Declinamos toda responsabilidad derivada de la información proporcionada.**

This information is supplied without liability